

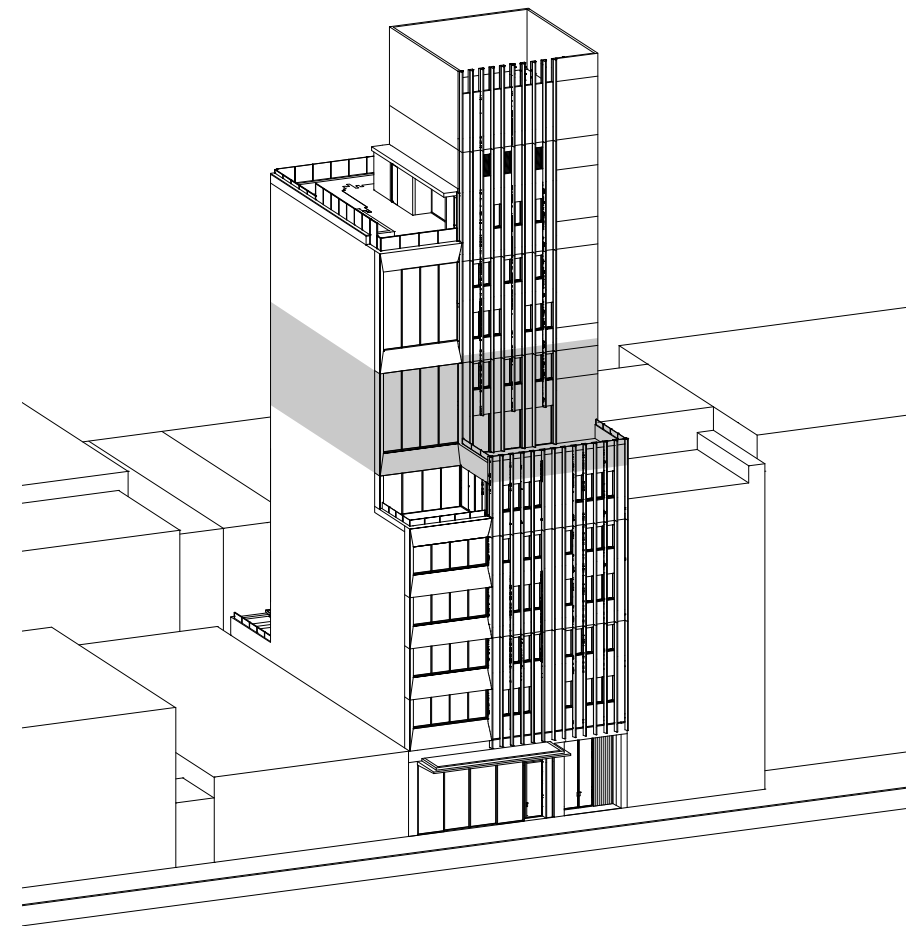
PH2



ABI CHELSEA  
455 WEST 19TH

“Each apartment has its own personality and feel, and each floor is designed to take full advantage of its particular position in terms of the view and the orientation.”

— Raëd Abillama, Architect



## **ABI CHELSEA**

A new development in one of the most vibrant neighborhoods of Manhattan, Abi Chelsea offers a distinctive addition to West 19th Street with a combination of an art gallery at street level and ten luxurious homes in the eight stories above.

Designed over multiple levels with a distinctive stepped formation, the property sits near the High Line and offers a unique perspective. Each home has been individually designed to make the most of its relationship with the city and the skyline beyond. Several of the residences feature generous balconies and outdoor living spaces, while the penthouse provides a secluded rooftop garden complete with a swimming pool.

The ten individual homes at Abi Chelsea are defined by their depth of character and essential vitality. Each of them has been designed to the highest standard, with the finest materials and finishes, including Carrara marble, oak, walnut and terrazzo. A fluted brise soleil lends interest to the sculpted façade, while the outline of the building has been softened with plantings positioned throughout.



## SERVICES & AMENITIES

- Attended Lobby
- Mailroom and cold storage
- Residential storage available for purchase in Cellar
- Common Rooftop Deck with views of the Empire State Building
- Direct elevator entry with secure electronic key-fob control



Lobby Entrance



### **DIRECT ELEVATOR ENTRANCE & TERRACE**

Pivot glazed window doors open the apartment up to the private Terrace and garden with impressive views of Chelsea and the Hudson River.



## LIVING ROOM

Double height loft Living Room with French oak flooring and 17 foot tall European windows that allow generous southern sunlight to fill the space.



## DINING & KITCHEN

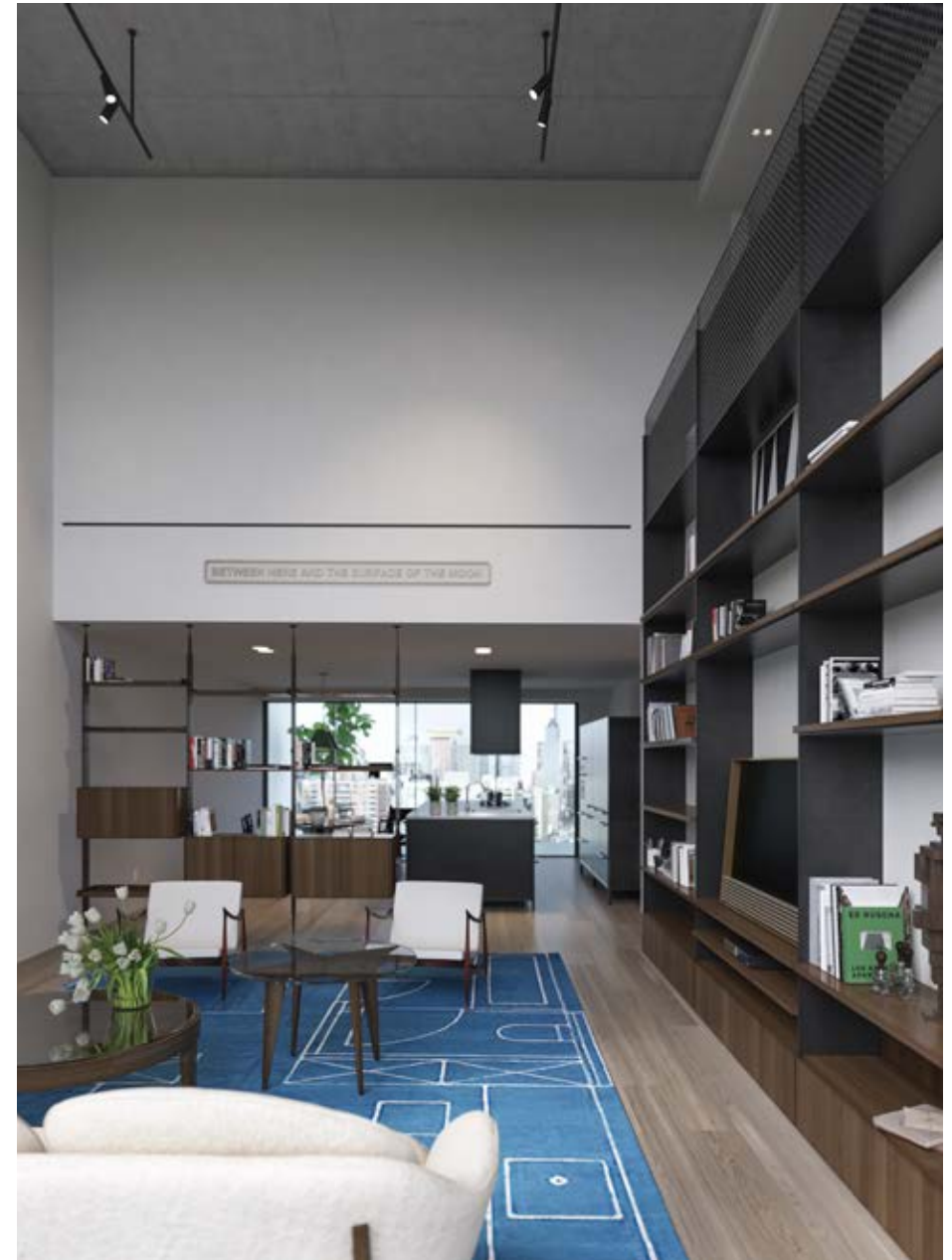
With integrated storage, stainless steel worktops and a thoughtful fusion of style and function, free-standing sculptural designs are a key part of the Abi lifestyle.

- Vipp cabinets in black powder-coated steel
- Vipp solid stainless steel countertop with five integrated gas burners and knobs
- Vipp solid stainless steel sink and fixtures
- Vipp overhead embossed hood in black powder-coated steel

- FLOS lighting fixture by Vincent Van Duysen
- Liebherr refrigerator
- Fisher & Paykel dishwasher
- Gaggenau convection oven
- Liebherr wine refrigerator



Vipp Kitchen details



## LIVING ROOM

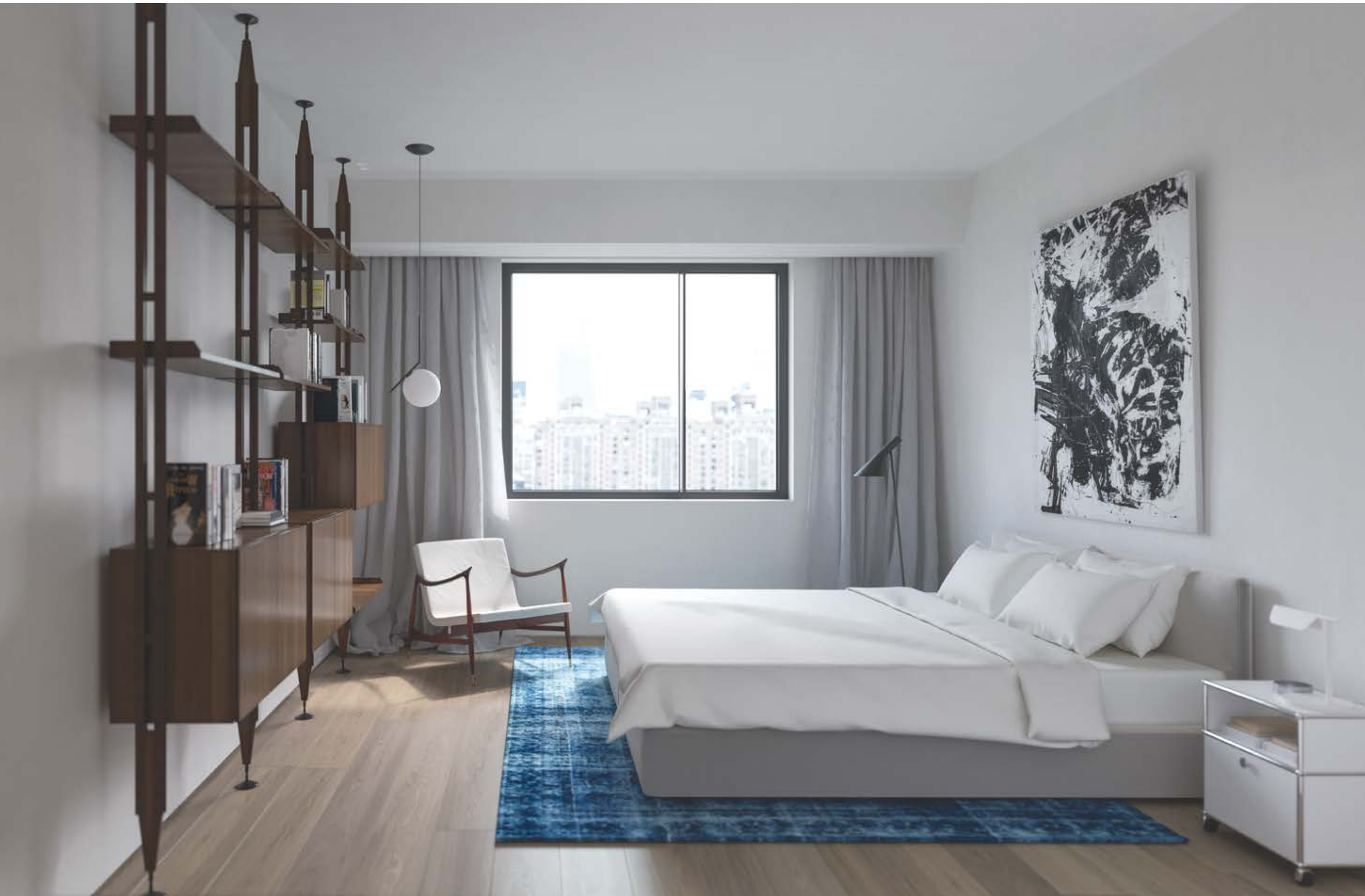
Double height loft space with open Kitchen and Dining area.



## MASTER BEDROOM & BATHROOM

Master Bedroom and Bathroom are cohesively separated by a Rimadesio Walk-In Closet and Dressing Room. The Bathroom features a solid Carrara marble sink and tiling with Vipp accessories and faucets.





**SECONDARY BEDROOM**



Penthouse sectional perspective

**INTERIOR:** 3,353 sq ft (311.5 sq m)

**EXTERIOR:** 637 sq ft (59.2 sq m)

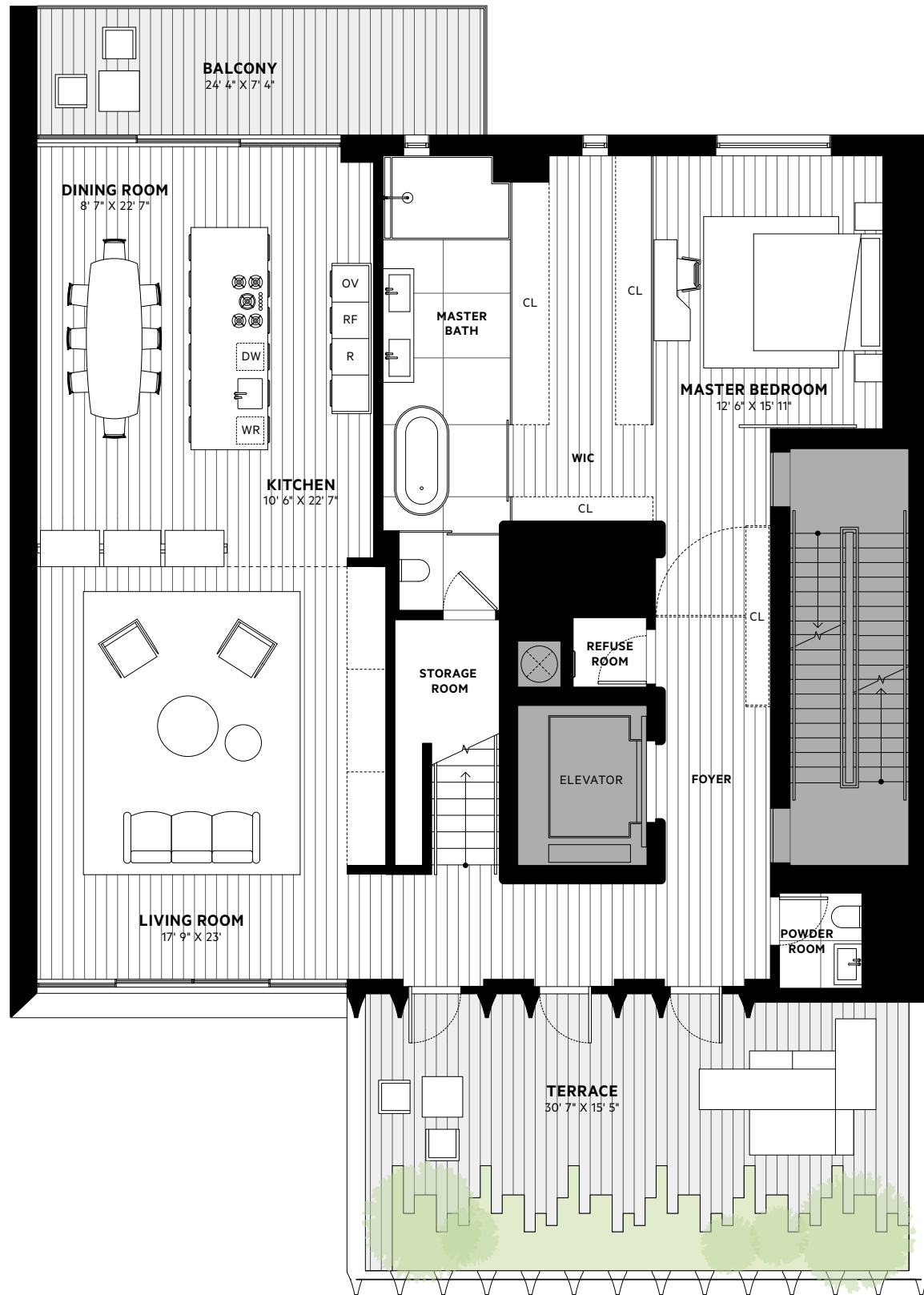
**BEDROOMS:** 4

**BATHROOMS:** 3

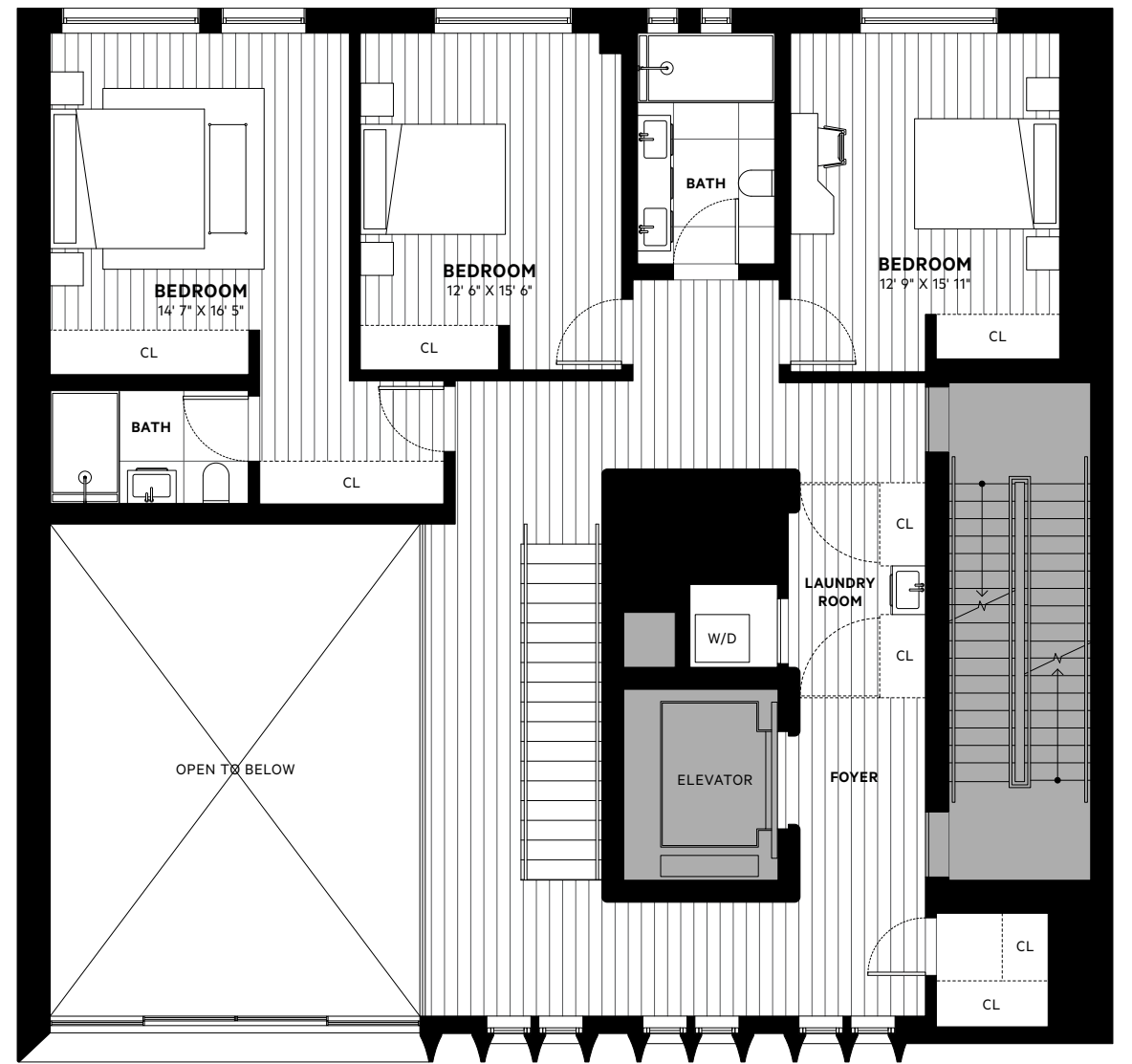
**POWDER ROOM:** 1

## RESIDENCE FEATURES

- Direct elevator entry with secure electronic key-fob control
- Lower level private Terrace and Balcony
- Up to 21' double-height ceilings in Living Room
- Up to 10' ceiling heights
- 8" wide smoked and white oiled French oak engineered hardwood flooring
- Rimadesio shelving systems in all Bedrooms
- Lutron lighting system
- Custom solid brass door handles designed by Ra'ed Abillama Architects
- Fair-faced architectural concrete Living Room ceilings and elevator core
- High-performance, low-e PanoramAH! window systems
- Electrolux washer and dryer
- Hydronic radiant heat floors in Living Room, Bathrooms and Kitchen
- Ultra-quiet, high efficiency, multi-zoned Daikin HVAC units



**LOWER LEVEL  
FLOOR 8**



**UPPER LEVEL  
FLOOR 9**

