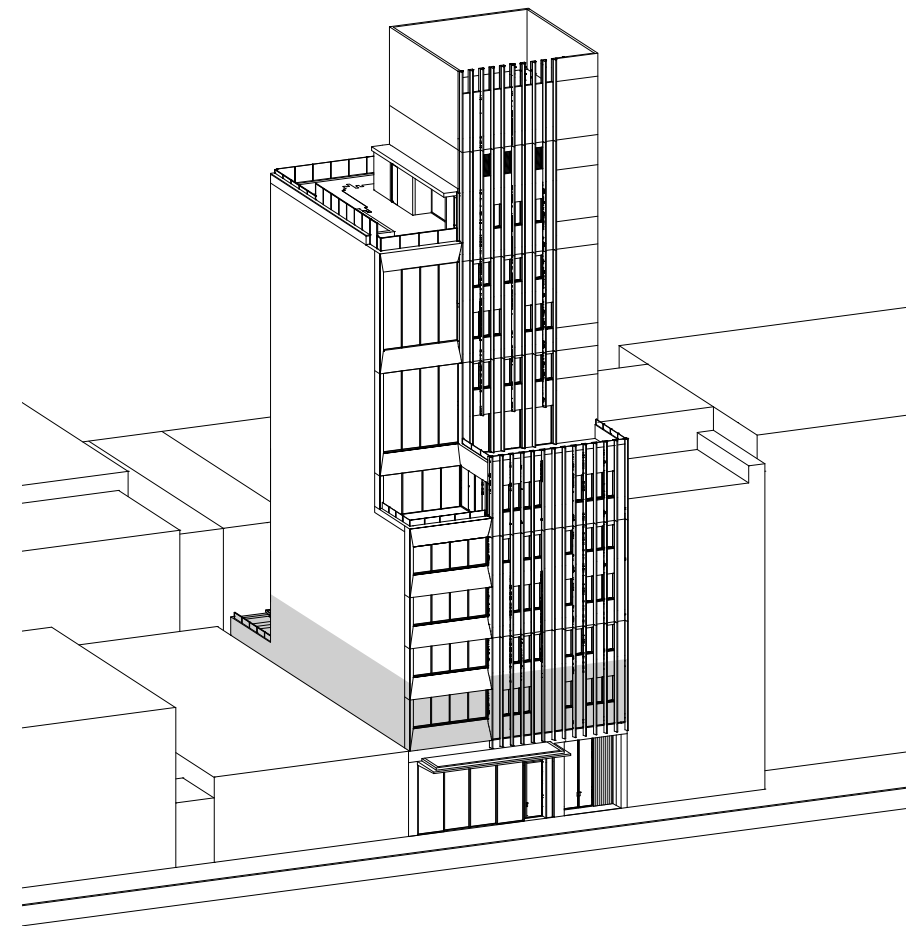


THIRD FLOOR



“Each apartment has its own personality and feel, and each floor is designed to take full advantage of its particular position in terms of the view and the orientation.”

— Raëd Abillama, Architect



ABI CHELSEA

A new development in one of the most vibrant neighborhoods of Manhattan, Abi Chelsea offers a distinctive addition to West 19th Street with a combination of an art gallery at street level and ten luxurious homes in the eight stories above.

Designed over multiple levels with a distinctive stepped formation, the property sits near the High Line and offers a unique perspective. Each home has been individually designed to make the most of its relationship with the city and the skyline beyond. Several of the residences feature generous balconies and outdoor living spaces, while the penthouse provides a secluded rooftop garden complete with a swimming pool.

The ten individual homes at Abi Chelsea are defined by their depth of character and essential vitality. Each of them has been designed to the highest standard, with the finest materials and finishes, including Carrara marble, oak, walnut and terrazzo. A fluted brise soleil lends interest to the sculpted façade, while the outline of the building has been softened with plantings positioned throughout.



SERVICES & AMENITIES

- Attended Lobby
- Mailroom and cold storage
- Residential storage available for purchase in Cellar
- Common Rooftop Deck with views of the Empire State Building
- Direct elevator entry with secure electronic key-fob control



Lobby Entrance



INDOOR/OUTDOOR LIVING

With French oak flooring and wall length sliding window system, the open plan layout seamlessly connects Living Room, Kitchen, Dining and Garden Terrace to create a balanced and harmonious home.



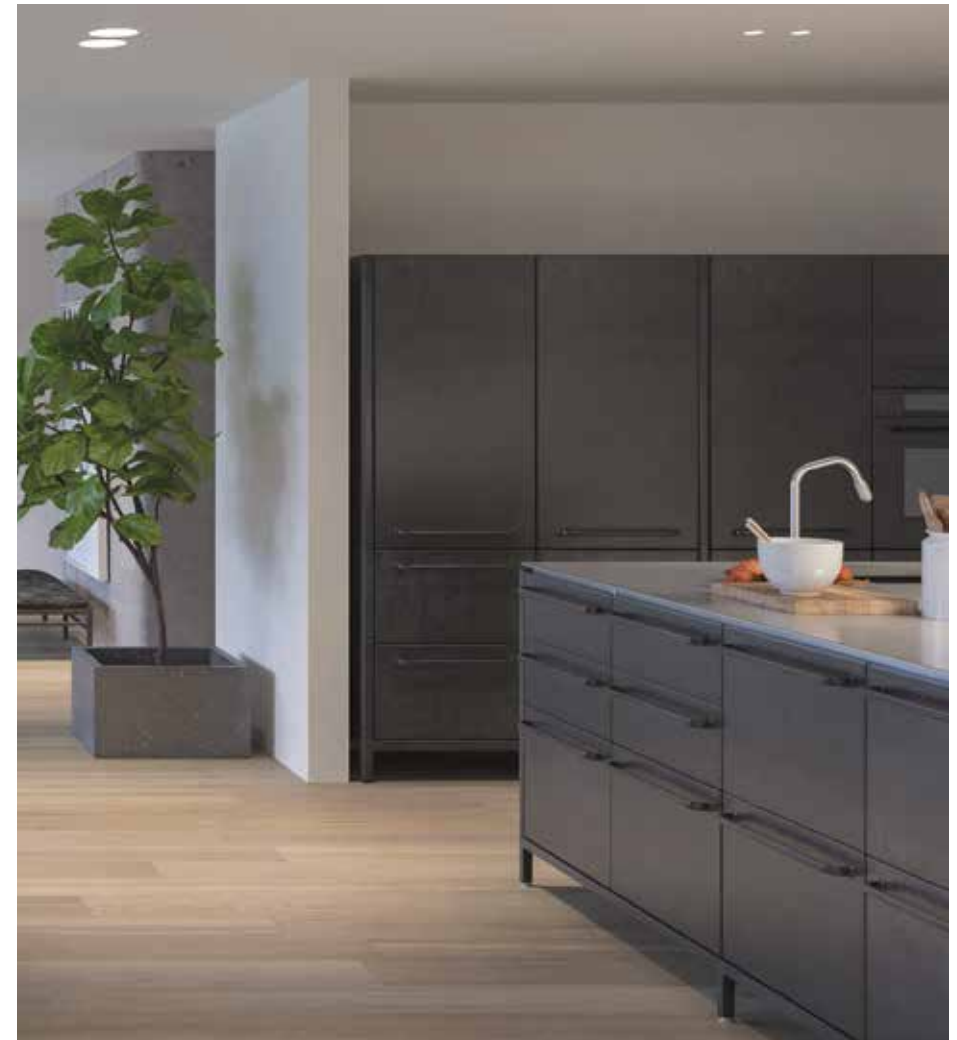
The Terrace is paved with white Carrara marble terrazzo that poetically interweaves with the garden



The wall length sliding window system saturates the space with sunlight all day long



Vipp Kitchen details



KITCHEN

With integrated storage, stainless steel worktops and a thoughtful fusion of style and function, free-standing sculptural designs are a key part of the Abi lifestyle.

- Vipp cabinets in black powder-coated steel
- Vipp solid stainless steel countertop with five integrated gas burners and knobs
- Vipp solid stainless steel sink and fixtures
- Vipp overhead embossed hood in black powder-coated steel
- FLOS lighting fixture by Vincent Van Duysen
- Liebherr refrigerator
- Fisher & Paykel dishwasher
- Gaggenau convection oven



MASTER BEDROOM & BATHROOM

Passing through the walk-in Rimadesio closet, the sun-filled Master Bedroom is lined with large sliding glass windows. The adjoining Master Bathroom features a solid Carrara marble sink and tiling with Vipp accessories and faucets.



INTERIOR: 2,558 sq ft (237.7 sq m)

EXTERIOR: 1,110 sq ft (103.1 sq m)

BEDROOMS: 3

BATHROOMS: 3

POWDER ROOM: 1

RESIDENCE FEATURES

- Direct elevator entry with secure electronic key-fob control
- Private landscaped Terrace
- Up to 10' ceiling heights
- 8" wide smoked and white oiled French oak engineered hardwood flooring
- Rimadesio shelving systems in all Bedrooms
- Custom solid brass door handles designed by Raed Abillama Architects
- Fair-faced architectural concrete Living Room ceilings and elevator core
- Lutron lighting system
- High-performance, low-e PanoramAH! window systems
- Electrolux washer and dryer
- Hydronic radiant heat floors in Living Room, Bathrooms and Kitchen
- Ultra-quiet, high efficiency, multi-zoned Daikin HVAC unit



SCALE: 0.125 IN = 1 FT

